

Montefiore Procalcitonin Guidelines

Prepared by Antimicrobial Stewardship & Critical Care Medicine

Procalcitonin (PCT) is the prohormone of calcitonin. In healthy hosts, calcitonin is produced in the thyroid gland. PCT is ubiquitously and uniformly expressed in multiple tissues throughout the body in response to bacterial stimuli. Elevated circulating levels of PCT are important markers in response to microbial infection. In clinical practice, it can be used to help determine the likelihood of the presence of bacterial infection and guide cessation of antibiotic therapy. PCT has excellent correlation with severity of infection (higher levels indicate more severe infection and higher mortality risk). Although, PCT is a helpful tool to differentiate between bacterial vs. viral infection, decisions regarding antimicrobial therapy should not be based solely on PCT serum concentrations alone. PCT should be placed into the clinical context of 1) site of infection, 2) likelihood of bacterial infection, 3) severity of illness and any other pertinent clinical data.

Clinical situations where PCT may be useful:

- Determination of antibiotic de-escalation and treatment duration in sepsis
- Differentiation of bacterial vs. viral lower respiratory tract infections (LRTI)
- Determination of antibiotic treatment duration in LRTI

Advantages of PCT:

- Not affected by corticosteroids
- Not affected by most autoimmune diseases
- Not affected by decreasing immune function/oncology therapy (i.e. neutropenia)
- Can use with disease modifying drugs
- Can use with other medications affecting inflammatory mediators

PCT kinetics:

- Rises rapidly 3-6 hours after bacterial infection
- Peak occurs 12-24 hours
- Half-life 24 hours (rapid decline with immune control on infection)
- Can take 24 hours of appropriate antibiotic therapy to see reduction in serum PCT
- PCT production and serum concentrations will decrease by up to 50% per day with appropriate antibiotic treatment
- If antibiotic therapy is inadequate, PCT levels will remain high

Situations where PCT elevations may be due to a non-bacterial cause:

- Acute graft vs. host disease
- Cytokine stimulating agent (OKT3, anti-lymphocyte globulins, alemtuzumab, IL-2, granulocyte transfusion)
- End stage renal disease (ESRD), hemodialysis (HD), peritoneal dialysis (PD)-see page 7 for details
- Malaria
- Massive stress: severe trauma, surgery, burns, prolonged severe cardiac shock or organ perfusion abnormalities (in absence of infection, PCT levels trend down after inciting event)
- Newborns (<48-72 hours after birth)

- Pancreatitis
- Paraneoplastic syndromes due to medullary thyroid and small cell lung cancer

Situations where PCT can be falsely decreased:

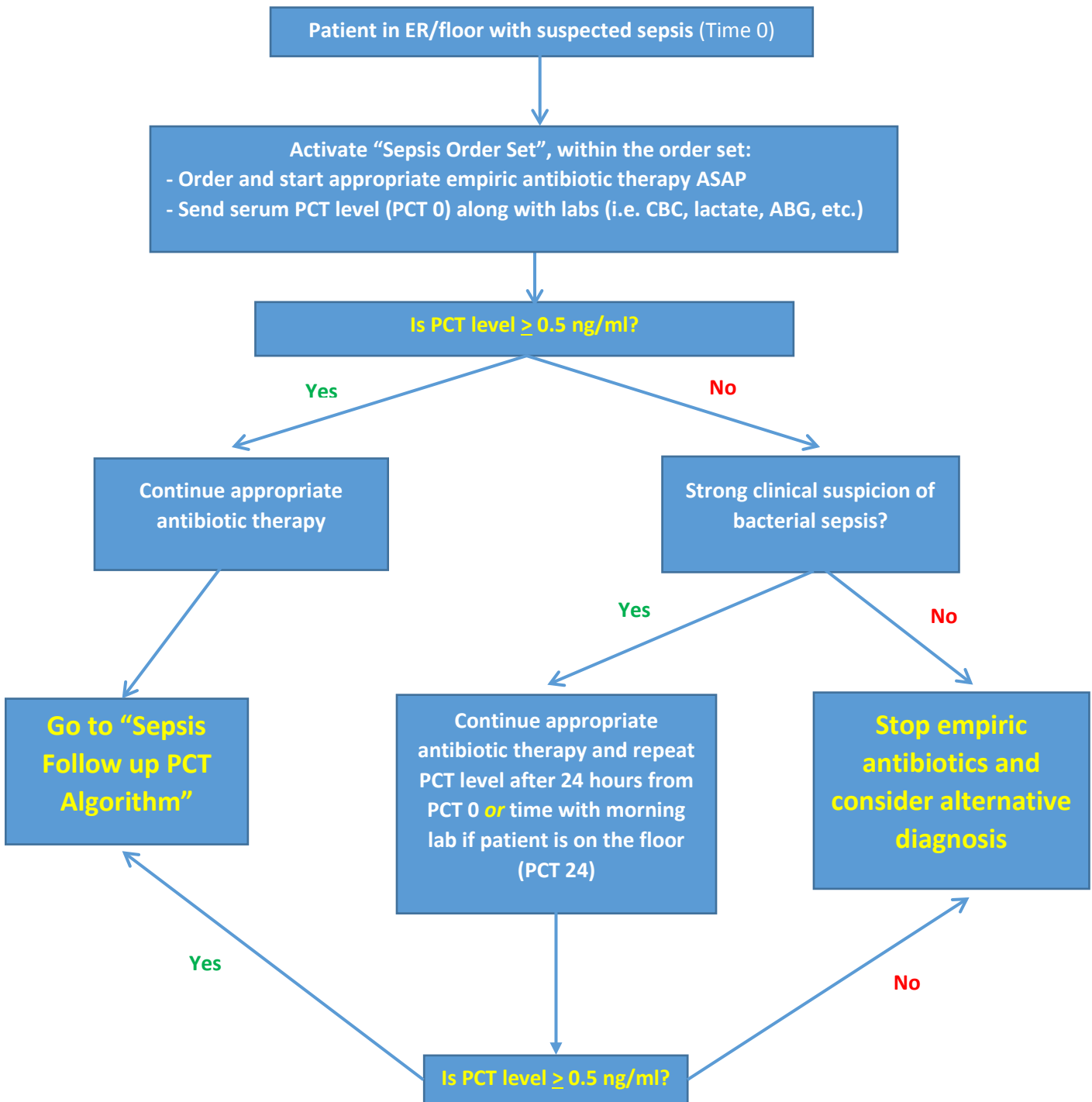
- Localized infections (osteomyelitis, abscess, subacute endocarditis)
- PCT is checked too early in the course of bacterial infection (i.e. acute bacterial sepsis)

Procalcitonin levels and interpretation (*Please see [MMC Empiric Regimens](#) guide for syndrome-based antibiotic recommendations*)

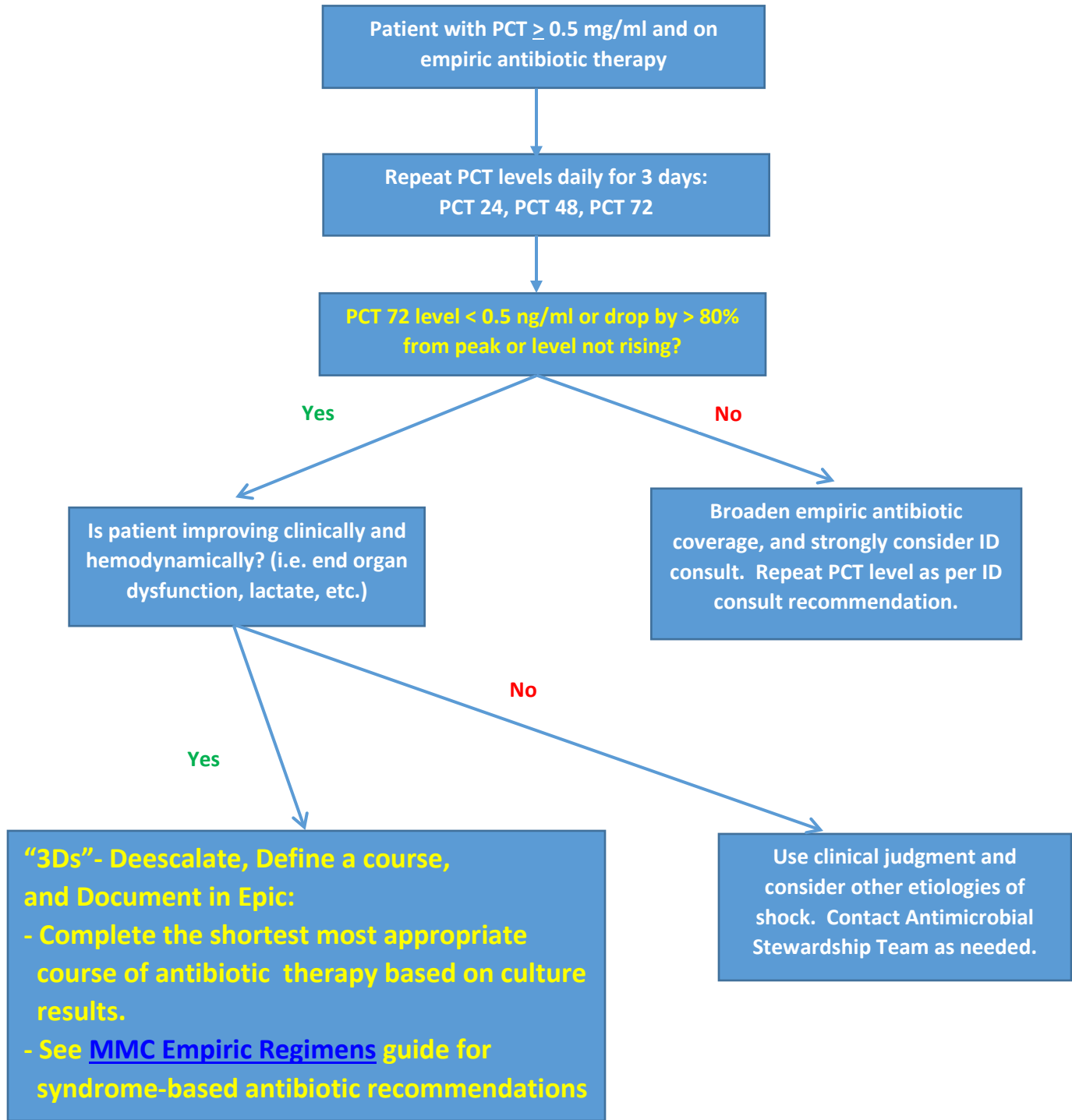
Procalcitonin for Sepsis (Strongly consider antibiotic initiation if high suspicion of serious bacterial infection regardless of PCT value)		
PCT value	Antibiotic Use Recommendation	
<0.25 ng/ml	Strongly discouraged	-Repeat PCT level in 24 hours if strong suspicion of early bacterial sepsis
0.25-0.49 ng/ml	Discouraged	
≥0.5-1.0 ng/ml	Encouraged	-Refer to flow chart (page 3-4) for specific guidance and PCT follow up monitoring
>1.0 ng/ml	Strongly encouraged	

Procalcitonin for LRTI (Pneumonia, COPD exacerbation, bronchitis)		
PCT value	Antibiotic Use Recommendation	
<0.1 ng/ml	Strongly discouraged	- Repeat PCT level in 24 hours if strong suspicion of early bacterial infection
0.1-0.24 ng/ml	Discouraged	
0.25-0.5 ng/ml	Encouraged	- Refer to flow chart (page 5-6) for specific guidance and PCT follow up monitoring
>0.5 ng/ml	Strongly encouraged	

Sepsis Procalcitonin (PCT) Algorithm

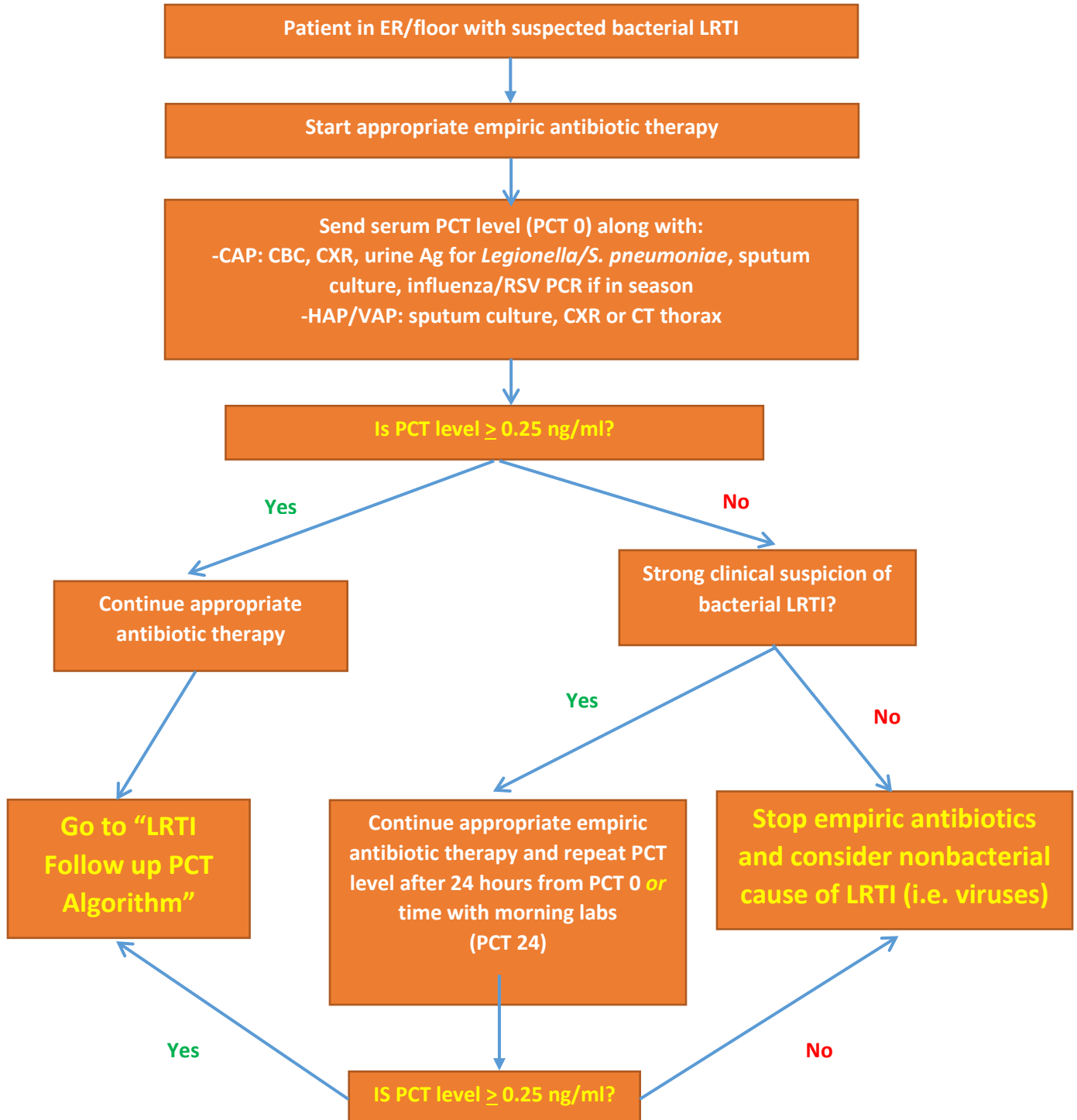


Sepsis Follow Up Procalcitonin (PCT) Algorithm



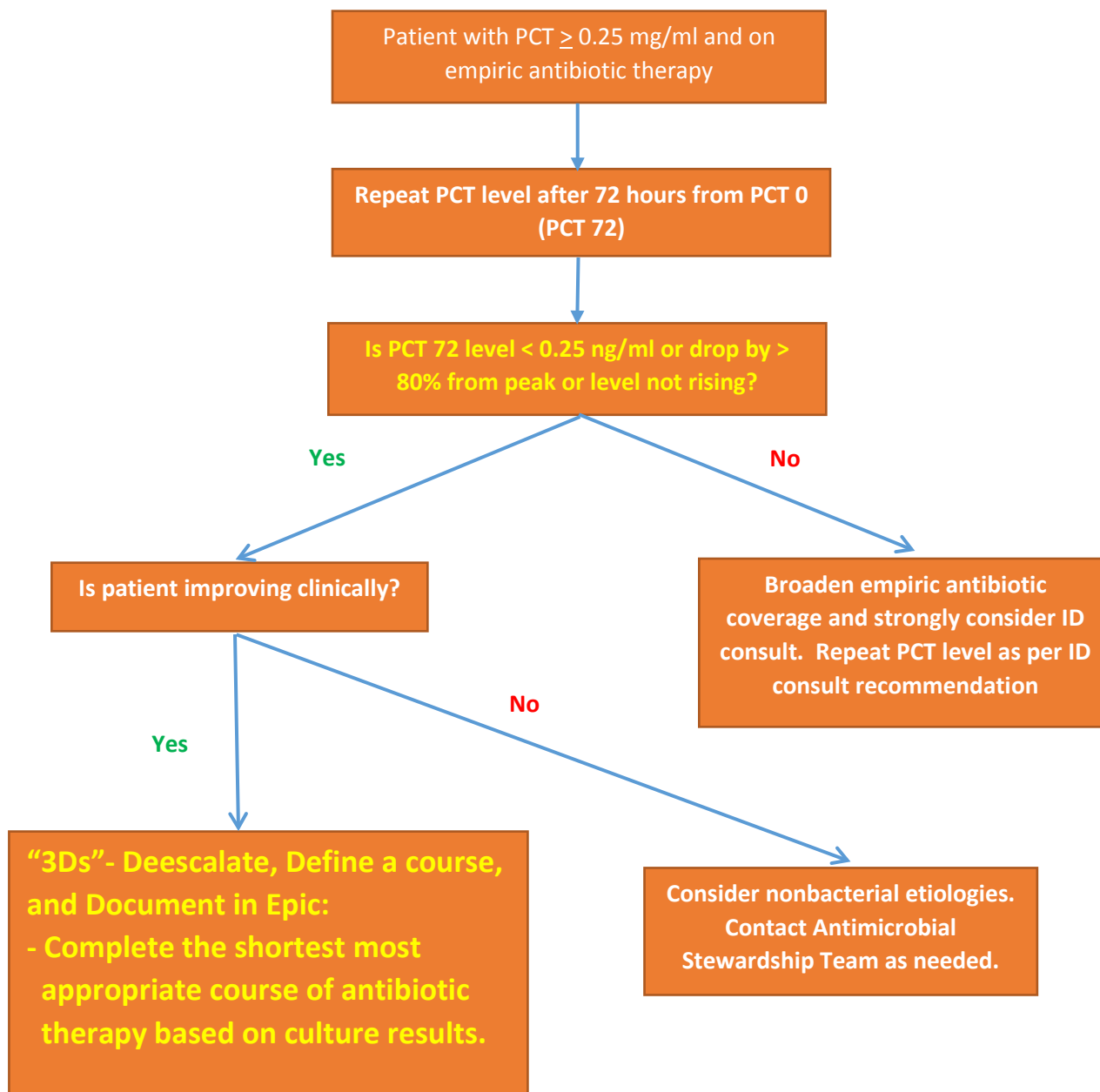
Lower Respiratory Tract Infections (LRTI) Procalcitonin (PCT) Algorithm

**** If patient has severe sepsis or septic shock, please see "Sepsis Procalcitonin Protocol" ****



Lower Respiratory Tract Infections (LRTI) Follow Up Procalcitonin (PCT) Algorithm

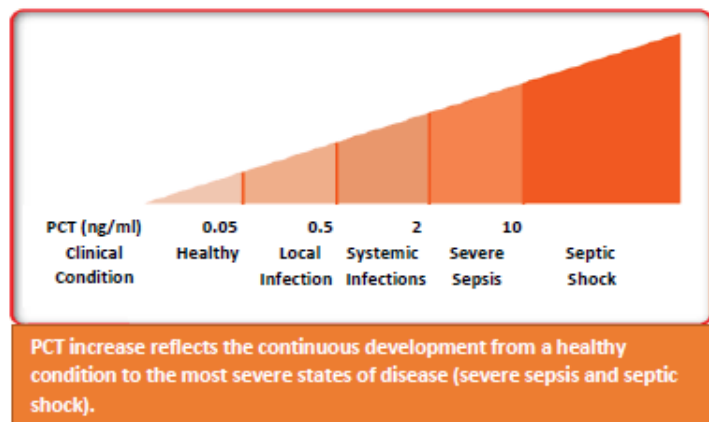
**** If patient has severe sepsis or septic shock, please see
"Sepsis Follow up Procalcitonin Protocol" ****



General PCT interpretation:

Sepsis:

PCT levels of >2 ng/ml predicts sepsis and levels of >10 ng/ml indicates likely septic shock. Higher PCT levels have shown to be associated with a worse prognosis, but have not generally added to well validated clinical scoring systems such as APACHE.



Bacterial Meningitis:

Levels <0.5 ng/ml make bacterial meningitis very unlikely. Most patients with bacterial meningitis have much higher PCT levels (>5 ng/ml).

Febrile children:

PCT levels >2 ng/ml make a serious infection much more likely while levels of <0.5 ng/ml make a serious infection much less likely. Values between 0.5 and 2 ng/ml are equivocal. Decisions on antibiotic administration in newborn patients should be based on clinical judgment.

PCT in ESRD patients:

PCT is known to be higher in ESRD due to decreased clearance. See table below for PCT threshold

Renal Impairment	PCT value	Interpretation
Stage 5 CKD (GFR<15ml/min)	>0.5 ng/ml	Suspect bacterial infection
HD	Predialysis level >0.5	Suspect bacterial infection
PD	Predialysis level >0.5	Use clinical judgment and other infection markers
Renal transplant	>0.14-0.22?	Use clinical judgment and other infection markers

References:

1. Broyle M. Impact of procalcitonin (PCT)-guided antibiotic management on antibiotic exposure and outcomes: real world evidence. *Open Forum Infect Dis* 2017; 4(4):1-7, <https://doi.org/10.1093/ofid/ofx213>
2. Chirouze C, Schuhmacher H, Rabaud C. Low serum procalcitonin level accurately predicts the absence of bacteremia in adult patients with acute fever. *Clin Infect Dis*. 2002; 35:156-161.

3. Chu DC, Mheta AB, Walkey AJ. Practice patterns and outcomes associated with procalcitonin use in critically ill patients with sepsis. *Clin Infect Dis*. 2017; 64:1509-1515.
4. Agarwal R, Schwartz D. Procalcitonin to guide duration of antimicrobial therapy in intensive care units: a systematic review. *Clin Infect Dis*. 2011; 53:379-387.
5. Schuetz P, et al. Effect of procalcitonin-based guidelines vs. standard guidelines on antibiotic use in lower respiratory tract infections. *JAMA*. 2009; 302:1059-66.
6. Schuetz P, et al. Procalcitonin for diagnosis of infection and guide to antibiotic decisions: past, present and future. *BMC Medicine*. 2011; 9:107.
7. Bouadma L, et al. Use of procalcitonin to reduce patients' exposure to antibiotics in intensive care units (PRORATA trial): a multicenter randomized controlled trial. *Lancet*. 2010; 375:463-74.
8. <https://www.fda.gov/AdvisoryCommittees/CommitteesMeetingMaterials/MedicalDevices/MedicalDevicesAdvisoryCommittee/MicrobiologyDevicesPanel/ucm515517.htm>
9. Bone RC, et al. Definitions for sepsis and organ failure and guidelines for the use of innovative therapies in sepsis. The ACCP/SCCM consensus conference committee. American College of Chest Physicians/Society of Critical Care Medicine. *Chest*. 1992 Jun; 101(6):1644-55.
10. Prina E, et al. Community-acquired Pneumonia, 2015. *Lancet* (386): 1097-1108.
11. Grace E, Turner R. Use of procalcitonin in patients with various degrees of chronic kidney disease including renal replacement therapy. *Clin Infect Dis*. 2014; 59(12):1761-1767.
12. Hayashi Y, Paterson DL. Strategies for reduction in duration of antibiotic use in hospitalized patients. *Clin Infect Dis*. 2011; 52:1232-40.
13. Shehab N, et al. Emergency department visits for antibiotic-associated adverse events. *Clin Infect Dis*. 2008; 47:735-43.
14. Nobre V, et al. Use of procalcitonin to shorten antibiotic treatment duration in septic patients. *Am J Respir Crit Care Med*. 2008; 177:498-505.
15. Stolz D, et al. Procalcitonin for reduced antibiotic exposure in ventilator-associated pneumonia: a randomized study. *Eur Respir J*. 2009; 34:1364-75.
16. Crist-Crain M, et al. Effect of procalcitonin-guided treatment on antibiotic use and outcome in lower respiratory tract infections: cluster-randomized, single-blinded intervention trial. *Lancet*. 2004; 363:600-7.
17. Stolz D, et al. Antibiotic treatment of exacerbations of COPD: a randomized, controlled trial comparing procalcitonin-guidance with standard therapy. *Chest*. 2007; 131:9-19.
18. Christ-Crain M, et al. Procalcitonin guidance of antibiotic therapy in community-acquired pneumonia. *Am J Respir Crit Care Med*. 2006; 174:84-93.
19. Li H, et al. Meta-analysis and systematic review of procalcitonin-guided therapy in respiratory tract infections. *Antimicrob Agents Chemother*. 2011; 55:5900-6.
20. Agarwal R and Schwartz DN. Procalcitonin to guide duration of antimicrobial therapy and intensive care units: a systematic review. *Clin Infect Dis*. 2011; 53:379-87.
21. Heyland DK, et al. Procalcitonin for reduced antibiotic exposure in the critical care setting: a systematic review and an economic evaluation. *Crit Care Med*. 2011; 39:1792-9.
22. Kopterides P, et al. Procalcitonin-guided algorithms of antibiotic therapy in the intensive care unit: a systematic review and meta-analysis of randomized controlled trials. *Crit Care Med*. 2010; 38:2229-41.
23. Jensen JU, et al. Procalcitonin-guided interventions against infections to increase early appropriate antibiotics and improve survival in the intensive care unit. *Crit Care Med*. 2011; 39:2048-58.